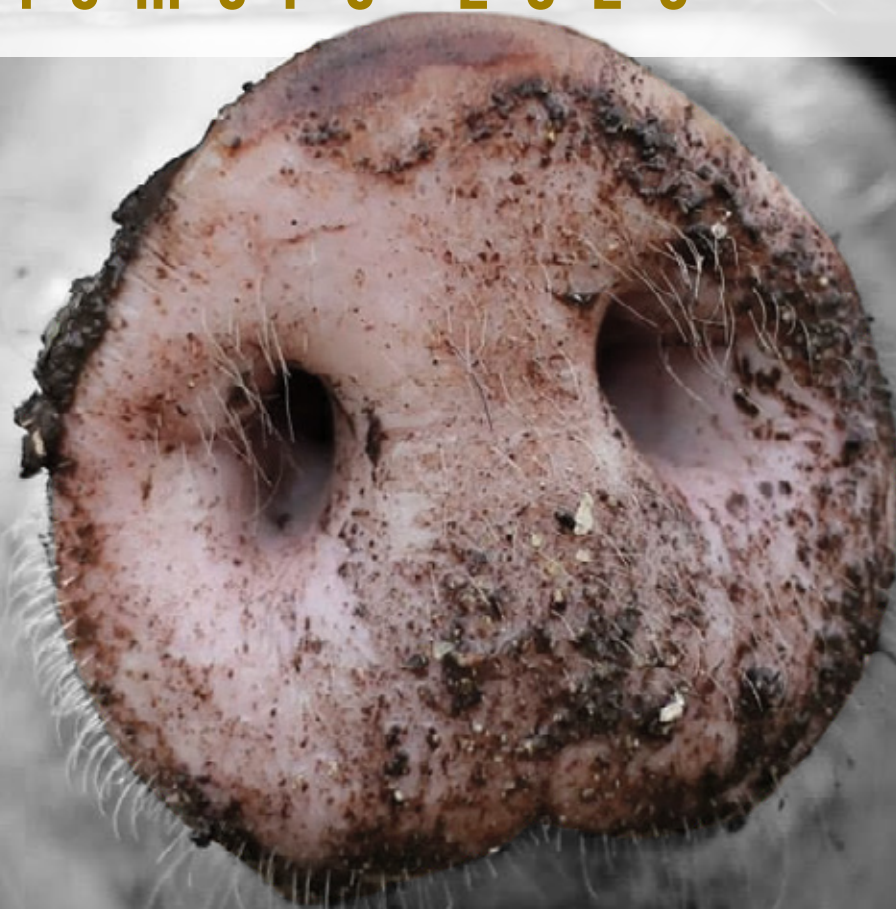


# RESULTADOS DE LAS ENCUESTAS DE GANADO PORCINO

noviembre 2023



GOBIERNO  
DE ESPAÑA

MINISTERIO  
DE AGRICULTURA, PESCA  
Y ALIMENTACIÓN

ENCUESTAS GANADERAS, 2023							
GANADO PORCINO							
Análisis provincial del censo de animales por tipos, NOVIEMBRE 2023 (número de animales)							
Provincias y Comunidades Autónomas	Total animales	Lechones <sup>1</sup>	Cerdos de 20-49 kg (peso vivo)	Cerdos en cebo			
				Total cerdos de cebo (peso vivo)	De 50-79 kg	De 80-109 kg	> 109 kg
Coruña (La)	380.460	149.601	40.284	146.133	59.331	76.710	10.092
Lugo	333.825	92.903	48.084	177.652	73.779	83.028	20.845
Orense	465.840	197.973	46.900	179.553	44.965	129.100	5.488
Pontevedra	447.234	88.541	47.016	291.548	100.722	149.842	40.984
<b>GALICIA</b>	<b>1.627.359</b>	<b>529.018</b>	<b>182.284</b>	<b>794.886</b>	<b>278.797</b>	<b>438.680</b>	<b>77.409</b>
<b>P. DE ASTURIAS</b>	<b>6.118</b>	<b>1.587</b>	<b>1.323</b>	<b>2.382</b>	<b>953</b>	<b>1.072</b>	<b>357</b>
<b>CANTABRIA</b>	<b>949</b>	<b>98</b>	<b>36</b>	<b>642</b>	<b>257</b>	<b>276</b>	<b>109</b>
Alava	21.966	1.550	6.075	13.501	5.837	5.792	1.872
Guipúzcoa	6.278	698	1.057	4.227	1.828	1.813	586
Vizcaya	1.891	34	356	1.425	697	688	40
<b>PAIS VASCO</b>	<b>30.135</b>	<b>2.282</b>	<b>7.488</b>	<b>19.153</b>	<b>8.362</b>	<b>8.293</b>	<b>2.498</b>
<b>NAVARRA</b>	<b>826.141</b>	<b>222.182</b>	<b>71.929</b>	<b>459.672</b>	<b>304.547</b>	<b>139.235</b>	<b>15.890</b>
<b>LA RIOJA</b>	<b>159.286</b>	<b>16.901</b>	<b>39.271</b>	<b>98.449</b>	<b>55.098</b>	<b>42.897</b>	<b>454</b>
Huesca	5.106.266	1.563.547	1.326.464	1.914.525	691.519	965.054	257.952
Teruel	1.239.006	202.837	475.756	491.828	255.365	175.532	60.931
Zaragoza	3.267.523	1.128.178	778.161	1.042.518	335.634	485.854	221.030
<b>ARAGON</b>	<b>9.612.795</b>	<b>2.894.562</b>	<b>2.580.381</b>	<b>3.448.871</b>	<b>1.282.518</b>	<b>1.626.440</b>	<b>539.913</b>
Barcelona	1.986.323	827.632	376.143	590.478	220.152	259.528	110.798
Girona	830.924	157.536	258.001	347.149	91.222	151.041	104.886
Lleida	4.596.730	1.668.139	827.999	1.798.638	926.960	783.447	88.231
Tarragona	647.160	246.488	54.626	296.428	132.898	138.832	24.698
<b>CATALUÑA</b>	<b>8.061.137</b>	<b>2.899.795</b>	<b>1.516.769</b>	<b>3.032.693</b>	<b>1.371.232</b>	<b>1.332.848</b>	<b>328.613</b>
<b>BALEARES</b>	<b>42.446</b>	<b>15.283</b>	<b>2.416</b>	<b>13.777</b>	<b>4.770</b>	<b>4.440</b>	<b>4.567</b>
Ávila	309.584	126.649	55.382	105.364	21.652	46.076	37.636
Burgos	460.834	159.656	81.180	173.312	88.617	81.796	2.899
León	131.531	22.092	26.676	77.199	28.535	35.498	13.166
Palencia	125.430	58.893	16.562	37.552	22.448	3.069	12.035
Salamanca	677.928	175.187	103.773	330.872	95.386	100.427	135.059
Segovia	1.353.907	524.756	225.615	467.313	216.945	182.812	67.556
Soria	539.223	148.510	137.795	145.138	37.884	74.607	32.647
Valladolid	420.576	109.784	65.647	190.222	62.652	67.395	60.175
Zamora	603.568	182.189	102.887	267.567	148.163	72.099	47.305
<b>CASTILLA LEON</b>	<b>4.622.581</b>	<b>1.507.716</b>	<b>815.517</b>	<b>1.794.539</b>	<b>722.282</b>	<b>663.779</b>	<b>408.478</b>
<b>MADRID</b>	<b>16.697</b>	<b>8.317</b>	<b>454</b>	<b>3.964</b>	<b>967</b>	<b>2.918</b>	<b>79</b>
Albacete	359.539	172.091	81.018	84.443	28.712	29.819	25.912
Ciudad Real	30.764	7.848	3.719	14.088	5.434	2.300	6.354
Cuenca	325.619	128.871	39.606	120.580	33.907	51.795	34.878
Guadalajara	24.474	17.955	1.103	920	4	0	916
Toledo	1.098.463	359.891	228.389	435.861	188.991	192.593	54.277
<b>CASTILLA LA MANCHA</b>	<b>1.838.859</b>	<b>686.656</b>	<b>353.835</b>	<b>655.892</b>	<b>257.048</b>	<b>276.507</b>	<b>122.337</b>
Alicante	58.543	35.447	2.710	14.334	9.813	4.520	1
Castellón	640.782	233.682	177.328	189.916	113.066	71.332	5.518
Valencia	374.666	124.449	99.008	117.114	17.482	66.777	32.855
<b>C. VALENCIANA</b>	<b>1.073.991</b>	<b>393.578</b>	<b>279.046</b>	<b>321.364</b>	<b>140.361</b>	<b>142.629</b>	<b>38.374</b>
<b>R. DE MURCIA</b>	<b>1.802.213</b>	<b>359.125</b>	<b>391.507</b>	<b>898.918</b>	<b>412.820</b>	<b>314.309</b>	<b>171.789</b>
Badajoz	1.236.087	356.029	194.796	538.609	63.509	114.320	360.780
Cáceres	178.613	39.890	27.794	98.348	9.283	13.145	75.920
<b>EXTREMADURA</b>	<b>1.414.700</b>	<b>395.919</b>	<b>222.590</b>	<b>636.957</b>	<b>72.792</b>	<b>127.465</b>	<b>436.700</b>
Almería	700.597	219.267	210.398	243.131	119.906	121.627	1.598
Cádiz	54.557	12.633	14.518	19.475	6.413	4.843	8.219
Córdoba	257.709	37.539	44.241	149.467	20.628	18.694	110.145
Granada	335.378	167.998	50.579	75.588	33.484	38.270	3.834
Huelva	176.337	34.773	38.217	82.268	13.974	10.092	58.202
Jaén	144.406	50.075	32.835	42.646	21.609	18.089	2.948
Málaga	367.513	120.018	94.767	117.356	58.092	53.732	5.532
Sevilla	596.448	143.095	154.659	247.458	63.320	91.756	92.382
<b>ANDALUCIA</b>	<b>2.632.945</b>	<b>785.398</b>	<b>640.214</b>	<b>977.389</b>	<b>337.426</b>	<b>357.103</b>	<b>282.860</b>
Palmas (Las)	14.303	5.719	3.228	3.155	2.444	711	0
S. C. Tenerife	20.385	6.633	3.550	7.983	5.755	2.158	70
<b>CANARIAS</b>	<b>34.688</b>	<b>12.352</b>	<b>6.778</b>	<b>11.138</b>	<b>8.199</b>	<b>2.869</b>	<b>70</b>
<b>ESPAÑA</b>	<b>33.803.040</b>	<b>10.730.769</b>	<b>7.111.838</b>	<b>13.170.686</b>	<b>5.258.429</b>	<b>5.481.760</b>	<b>2.430.497</b>

<sup>1</sup> Cerdos con un peso vivo inferior a 20 Kg.  
Cambio metodológico en 2023

ENCUESTAS GANADERAS, 2023						
GANADO PORCINO						
Análisis provincial del censo de animales por tipos, NOVIEMBRE 2023 (número de animales)						
Provincias y Comunidades Autónomas	Verracos	Cerdas Reproductoras				
		Total Cerdas Reproductoras	Nunca han parido		Han parido	
			Cerdas todavía no cubiertas	Cerdas cubiertas por 1ª vez	Cerdas cubiertas más veces	Cerdas criando o en reposo
Coruña (La)	171	44.271	4.956	4.468	26.292	8.555
Lugo	177	15.009	2.857	0	5.976	6.176
Orense	211	41.203	3.101	2.279	28.364	7.459
Pontevedra	144	19.985	2.721	1.904	8.503	6.857
<b>GALICIA</b>	<b>703</b>	<b>120.468</b>	<b>13.635</b>	<b>8.651</b>	<b>69.135</b>	<b>29.047</b>
<b>P. DE ASTURIAS</b>	<b>80</b>	<b>746</b>	<b>100</b>	<b>89</b>	<b>418</b>	<b>139</b>
<b>CANTABRIA</b>	<b>19</b>	<b>154</b>	<b>5</b>	<b>31</b>	<b>74</b>	<b>44</b>
Alava	10	830	47	53	470	260
Guipúzcoa	13	283	16	18	160	89
Vizcaya	18	58	3	4	33	18
<b>PAIS VASCO</b>	<b>41</b>	<b>1.171</b>	<b>66</b>	<b>75</b>	<b>663</b>	<b>367</b>
<b>NAVARRA</b>	<b>209</b>	<b>72.149</b>	<b>10.821</b>	<b>6.229</b>	<b>44.534</b>	<b>10.565</b>
<b>LA RIOJA</b>	<b>22</b>	<b>4.643</b>	<b>576</b>	<b>474</b>	<b>2.219</b>	<b>1.374</b>
Huesca	912	300.818	32.483	37.902	171.878	58.555
Teruel	294	68.291	7.750	11.173	37.925	11.443
Zaragoza	878	317.788	42.830	43.807	167.693	63.458
<b>ARAGON</b>	<b>2.084</b>	<b>686.897</b>	<b>83.063</b>	<b>92.882</b>	<b>377.496</b>	<b>133.456</b>
Barcelona	639	191.431	17.939	26.037	104.028	43.427
Girona	262	67.976	9.224	10.060	36.548	12.144
Lleida	2.074	299.880	28.535	38.380	177.086	55.879
Tarragona	193	49.425	5.474	5.948	27.969	10.034
<b>CATALUÑA</b>	<b>3.168</b>	<b>608.712</b>	<b>61.172</b>	<b>80.425</b>	<b>345.631</b>	<b>121.484</b>
<b>BALEARES</b>	<b>715</b>	<b>10.255</b>	<b>679</b>	<b>323</b>	<b>4.448</b>	<b>4.805</b>
Ávila	202	21.987	2.708	2.510	12.796	3.973
Burgos	125	46.561	11.444	6.019	21.596	7.502
León	25	5.539	1.790	415	2.601	733
Palencia	40	12.383	882	1.579	6.833	3.089
Salamanca	1.807	66.289	5.261	5.086	35.338	20.604
Segovia	696	135.527	16.534	11.888	78.246	28.859
Soria	236	107.544	54.689	8.058	32.766	12.031
Valladolid	200	54.723	19.647	3.808	21.530	9.738
Zamora	424	50.501	14.172	6.052	21.620	8.657
<b>CASTILLA LEON</b>	<b>3.755</b>	<b>501.054</b>	<b>127.127</b>	<b>45.415</b>	<b>233.326</b>	<b>95.186</b>
<b>MADRID</b>	<b>45</b>	<b>3.917</b>	<b>440</b>	<b>291</b>	<b>1.605</b>	<b>1.581</b>
Albacete	107	21.880	1.170	3.218	12.585	4.907
Ciudad Real	225	4.884	404	539	2.936	1.005
Cuenca	132	36.430	4.806	6.074	18.888	6.662
Guadalajara	9	4.487	3.156	191	893	247
Toledo	440	73.882	5.412	7.568	38.451	22.451
<b>CASTILLA LA MANCHA</b>	<b>913</b>	<b>141.563</b>	<b>14.948</b>	<b>17.590</b>	<b>73.753</b>	<b>35.272</b>
Alicante	26	6.026	473	745	3.702	1.106
Castellón	217	39.639	3.745	2.924	24.330	8.640
Valencia	166	33.929	3.632	4.709	19.145	6.443
<b>C. VALENCIANA</b>	<b>409</b>	<b>79.594</b>	<b>7.850</b>	<b>8.378</b>	<b>47.177</b>	<b>16.189</b>
<b>R. DE MURCIA</b>	<b>486</b>	<b>152.177</b>	<b>34.406</b>	<b>22.160</b>	<b>72.355</b>	<b>23.256</b>
Badajoz	4.759	141.894	9.719	2.708	59.928	69.539
Cáceres	1.009	11.572	297	178	5.512	5.585
<b>EXTREMADURA</b>	<b>5.768</b>	<b>153.466</b>	<b>10.016</b>	<b>2.886</b>	<b>65.440</b>	<b>75.124</b>
Almería	133	27.668	3.334	3.625	16.567	4.142
Cádiz	400	7.531	780	845	4.174	1.732
Córdoba	1.369	25.093	2.563	2.848	12.996	6.686
Granada	366	40.847	4.900	5.308	24.504	6.135
Huelva	1.357	19.722	1.948	2.111	9.624	6.039
Jaén	136	18.714	2.264	2.451	11.175	2.824
Málaga	330	35.042	4.153	4.494	20.831	5.564
Sevilla	920	50.316	5.811	6.294	28.915	9.296
<b>ANDALUCIA</b>	<b>5.011</b>	<b>224.933</b>	<b>25.753</b>	<b>27.976</b>	<b>128.786</b>	<b>42.418</b>
Palmas (Las)	154	2.047	109	292	645	1.001
S. C. Tenerife	75	2.144	306	293	447	1.098
<b>CANARIAS</b>	<b>229</b>	<b>4.191</b>	<b>415</b>	<b>585</b>	<b>1.092</b>	<b>2.099</b>
<b>ESPAÑA</b>	<b>23.657</b>	<b>2.766.090</b>	<b>391.072</b>	<b>314.460</b>	<b>1.468.152</b>	<b>592.406</b>

ENCUESTAS GANADERAS, 2023 GANADO PORCINO <sup>1</sup> Análisis provincial del censo de animales por tipos, NOVIEMBRE 2023 (número de animales)							
Provincias y Comunidades Autónomas	Total animales	Lechones <sup>2</sup>	Cerdos de 20-49 kg (peso vivo)	Cerdos en cebo			
				Total cerdos de cebo (peso vivo)	De 50-79 kg	De 80-109 kg	> 109 kg
Coruña (La)	380.460	149.601	40.284	146.133	59.331	76.710	10.092
Lugo	333.825	92.903	48.084	177.652	73.779	83.028	20.845
Orense	465.840	197.973	46.900	179.553	44.965	129.100	5.488
Pontevedra	447.234	88.541	47.016	291.548	100.722	149.842	40.984
<b>GALICIA</b>	<b>1.627.359</b>	<b>529.018</b>	<b>182.284</b>	<b>794.886</b>	<b>278.797</b>	<b>438.680</b>	<b>77.409</b>
<b>P. DE ASTURIAS</b>	<b>6.118</b>	<b>1.587</b>	<b>1.323</b>	<b>2.382</b>	<b>953</b>	<b>1.072</b>	<b>357</b>
<b>CANTABRIA</b>	<b>949</b>	<b>98</b>	<b>36</b>	<b>642</b>	<b>257</b>	<b>276</b>	<b>109</b>
Alava	21.966	1.550	6.075	13.501	5.837	5.792	1.872
Guipúzcoa	6.278	698	1.057	4.227	1.828	1.813	586
Vizcaya	1.891	34	356	1.425	697	688	40
<b>PAIS VASCO</b>	<b>30.135</b>	<b>2.282</b>	<b>7.488</b>	<b>19.153</b>	<b>8.362</b>	<b>8.293</b>	<b>2.498</b>
<b>NAVARRA</b>	<b>826.141</b>	<b>222.182</b>	<b>71.929</b>	<b>459.672</b>	<b>304.547</b>	<b>139.235</b>	<b>15.890</b>
<b>LA RIOJA</b>	<b>159.286</b>	<b>16.901</b>	<b>39.271</b>	<b>98.449</b>	<b>55.098</b>	<b>42.897</b>	<b>454</b>
Huesca	5.106.266	1.563.547	1.326.464	1.914.525	691.519	965.054	257.952
Teruel	1.239.006	202.837	475.756	491.828	255.365	175.532	60.931
Zaragoza	3.267.523	1.128.178	778.161	1.042.518	335.634	485.854	221.030
<b>ARAGON</b>	<b>9.612.795</b>	<b>2.894.562</b>	<b>2.580.381</b>	<b>3.448.871</b>	<b>1.282.518</b>	<b>1.626.440</b>	<b>539.913</b>
Barcelona	1.986.323	827.632	376.143	590.478	220.152	259.528	110.798
Girona	830.924	157.536	258.001	347.149	91.222	151.041	104.886
Lleida	4.596.730	1.668.139	827.999	1.798.638	926.960	783.447	88.231
Tarragona	647.160	246.488	54.626	296.428	132.898	138.832	24.698
<b>CATALUÑA</b>	<b>8.061.137</b>	<b>2.899.795</b>	<b>1.516.769</b>	<b>3.032.693</b>	<b>1.371.232</b>	<b>1.332.848</b>	<b>328.613</b>
<b>BALEARES</b>	<b>42.446</b>	<b>15.283</b>	<b>2.416</b>	<b>13.777</b>	<b>4.770</b>	<b>4.440</b>	<b>4.567</b>
Ávila	216.076	112.636	35.151	47.328	3.392	30.301	13.635
Burgos	422.436	133.454	74.516	168.815	85.609	80.307	2.899
León	113.381	17.996	26.614	63.207	22.568	33.086	7.553
Palencia	125.430	58.893	16.562	37.552	22.448	3.069	12.035
Salamanca	81.174	38.871	9.381	19.721	5.553	11.019	3.149
Segovia	1.198.191	488.267	184.846	403.411	201.395	168.318	33.698
Soria	528.230	140.948	137.795	145.138	37.884	74.607	32.647
Valladolid	324.482	72.461	61.428	150.149	54.482	58.014	37.653
Zamora	440.754	105.744	94.086	200.460	126.077	55.171	19.212
<b>CASTILLA LEON</b>	<b>3.450.154</b>	<b>1.169.270</b>	<b>640.379</b>	<b>1.235.781</b>	<b>559.408</b>	<b>513.892</b>	<b>162.481</b>
<b>MADRID</b>	<b>16.494</b>	<b>8.232</b>	<b>454</b>	<b>3.879</b>	<b>967</b>	<b>2.833</b>	<b>79</b>
Albacete	359.539	172.091	81.018	84.443	28.712	29.819	25.912
Ciudad Real	14.247	5.827	1.788	1.613	1.166	214	233
Cuenca	325.619	128.871	39.606	120.580	33.907	51.795	34.878
Guadalajara	8.754	2.840	1.103	905	0	0	905
Toledo	961.320	314.190	213.983	372.713	166.115	174.301	32.297
<b>CASTILLA LA MANCHA</b>	<b>1.669.479</b>	<b>623.819</b>	<b>337.498</b>	<b>580.254</b>	<b>229.900</b>	<b>256.129</b>	<b>94.225</b>
Alicante	58.543	35.447	2.710	14.334	9.813	4.520	1
Castellón	640.782	233.682	177.328	189.916	113.066	71.332	5.518
Valencia	374.666	124.449	99.008	117.114	17.482	66.777	32.855
<b>C. VALENCIANA</b>	<b>1.073.991</b>	<b>393.578</b>	<b>279.046</b>	<b>321.364</b>	<b>140.361</b>	<b>142.629</b>	<b>38.374</b>
<b>R. DE MURCIA</b>	<b>1.618.934</b>	<b>349.145</b>	<b>358.342</b>	<b>763.075</b>	<b>357.558</b>	<b>273.459</b>	<b>132.058</b>
Badajoz	54.645	32.057	6.891	7.318	1.184	5.902	232
Cáceres	6.422	2.758	803	2.560	38	44	2.478
<b>EXTREMADURA</b>	<b>61.067</b>	<b>34.815</b>	<b>7.694</b>	<b>9.878</b>	<b>1.222</b>	<b>5.946</b>	<b>2.710</b>
Almería	682.053	215.636	202.649	240.196	118.761	121.435	0
Cádiz	11.163	4.437	2.819	2.552	1.527	1.025	0
Córdoba	25.387	8.918	4.055	8.071	4.919	3.152	0
Granada	307.495	161.944	41.059	66.686	30.048	36.638	0
Huelva	4.651	3.546	0	4	0	4	0
Jaén	119.431	44.885	25.530	36.332	19.917	16.415	0
Málaga	342.427	114.769	89.379	107.522	56.931	50.591	0
Sevilla	406.137	124.770	113.026	131.727	51.249	80.478	0
<b>ANDALUCIA</b>	<b>1.898.744</b>	<b>678.905</b>	<b>478.517</b>	<b>593.090</b>	<b>283.352</b>	<b>309.738</b>	<b>0</b>
Palmas (Las)	14.303	5.719	3.228	3.155	2.444	711	0
S. C. Tenerife	20.385	6.633	3.550	7.983	5.755	2.158	70
<b>CANARIAS</b>	<b>34.688</b>	<b>12.352</b>	<b>6.778</b>	<b>11.138</b>	<b>8.199</b>	<b>2.869</b>	<b>70</b>
<b>ESPAÑA</b>	<b>30.189.917</b>	<b>9.851.824</b>	<b>6.510.605</b>	<b>11.388.984</b>	<b>4.887.501</b>	<b>5.101.676</b>	<b>1.399.807</b>

<sup>1</sup> No incluye el porcino ibérico

<sup>2</sup> Cerdos con un peso vivo inferior a 20 Kg.

ENCUESTAS GANADERAS, 2023						
GANADO PORCINO <sup>1</sup>						
Análisis provincial del censo de animales por tipos, NOVIEMBRE 2023 (número de animales)						
Provincias y Comunidades Autónomas	Verracos	Cerdas Reproductoras				
		Total Cerdas Reproductoras	Nunca han parido		Han parido	
			Cerdas todavía no cubiertas	Cerdas cubiertas por 1ª vez	Cerdas cubiertas más veces	Cerdas criando o en reposo
Coruña (La)	171	44.271	4.956	4.468	26.292	8.555
Lugo	177	15.009	2.857	0	5.976	6.176
Orense	211	41.203	3.101	2.279	28.364	7.459
Pontevedra	144	19.985	2.721	1.904	8.503	6.857
<b>GALICIA</b>	<b>703</b>	<b>120.468</b>	<b>13.635</b>	<b>8.651</b>	<b>69.135</b>	<b>29.047</b>
<b>P. DE ASTURIAS</b>	<b>80</b>	<b>746</b>	<b>100</b>	<b>89</b>	<b>418</b>	<b>139</b>
<b>CANTABRIA</b>	<b>19</b>	<b>154</b>	<b>5</b>	<b>31</b>	<b>74</b>	<b>44</b>
Alava	10	830	47	53	470	260
Guipúzcoa	13	283	16	18	160	89
Vizcaya	18	58	3	4	33	18
<b>PAIS VASCO</b>	<b>41</b>	<b>1.171</b>	<b>66</b>	<b>75</b>	<b>663</b>	<b>367</b>
<b>NAVARRA</b>	<b>209</b>	<b>72.149</b>	<b>10.821</b>	<b>6.229</b>	<b>44.534</b>	<b>10.565</b>
<b>LA RIOJA</b>	<b>22</b>	<b>4.643</b>	<b>576</b>	<b>474</b>	<b>2.219</b>	<b>1.374</b>
Huesca	912	300.818	32.483	37.902	171.878	58.555
Teruel	294	68.291	7.750	11.173	37.925	11.443
Zaragoza	878	317.788	42.830	43.807	167.693	63.458
<b>ARAGON</b>	<b>2.084</b>	<b>686.897</b>	<b>83.063</b>	<b>92.882</b>	<b>377.496</b>	<b>133.456</b>
Barcelona	639	191.431	17.939	26.037	104.028	43.427
Girona	262	67.976	9.224	10.060	36.548	12.144
Lleida	2.074	299.880	28.535	38.380	177.086	55.879
Tarragona	193	49.425	5.474	5.948	27.969	10.034
<b>CATALUÑA</b>	<b>3.168</b>	<b>608.712</b>	<b>61.172</b>	<b>80.425</b>	<b>345.631</b>	<b>121.484</b>
<b>BALEARES</b>	<b>715</b>	<b>10.255</b>	<b>679</b>	<b>323</b>	<b>4.448</b>	<b>4.805</b>
Avila	183	20.778	2.591	2.438	12.031	3.718
Burgos	123	45.528	11.320	5.938	21.216	7.054
León	25	5.539	1.790	415	2.601	733
Palencia	40	12.383	882	1.579	6.833	3.089
Salamanca	223	12.978	1.335	642	7.372	3.629
Segovia	625	121.042	13.469	10.857	71.113	25.603
Soria	221	104.128	54.529	7.867	30.482	11.250
Valladolid	143	40.301	17.643	2.552	13.857	6.249
Zamora	343	40.121	9.200	4.156	19.614	7.151
<b>CASTILLA LEON</b>	<b>1.926</b>	<b>402.798</b>	<b>112.759</b>	<b>36.444</b>	<b>185.119</b>	<b>68.476</b>
<b>MADRID</b>	<b>42</b>	<b>3.887</b>	<b>435</b>	<b>291</b>	<b>1.605</b>	<b>1.556</b>
Albacete	107	21.880	1.170	3.218	12.585	4.907
Ciudad Real	212	4.807	396	539	2.871	1.001
Cuenca	132	36.430	4.806	6.074	18.888	6.662
Guadalajara	5	3.901	3.091	122	521	167
Toledo	284	60.150	4.346	6.017	30.220	19.567
<b>CASTILLA LA MANCHA</b>	<b>740</b>	<b>127.168</b>	<b>13.809</b>	<b>15.970</b>	<b>65.085</b>	<b>32.304</b>
Alicante	26	6.026	473	745	3.702	1.106
Castellón	217	39.639	3.745	2.924	24.330	8.640
Valencia	166	33.929	3.632	4.709	19.145	6.443
<b>C. VALENCIANA</b>	<b>409</b>	<b>79.594</b>	<b>7.850</b>	<b>8.378</b>	<b>47.177</b>	<b>16.189</b>
<b>R. DE MURCIA</b>	<b>486</b>	<b>147.886</b>	<b>32.655</b>	<b>21.611</b>	<b>70.709</b>	<b>22.911</b>
Badajoz	106	8.273	660	630	4.227	2.756
Cáceres	41	260	0	0	36	224
<b>EXTREMADURA</b>	<b>147</b>	<b>8.533</b>	<b>660</b>	<b>630</b>	<b>4.263</b>	<b>2.980</b>
Almería	103	23.469	2.830	3.079	14.048	3.512
Cádiz	22	1.333	160	173	800	200
Córdoba	40	4.301	516	559	2.581	645
Granada	339	37.467	4.496	4.871	22.480	5.620
Huelva	4	1.098	132	143	658	165
Jaén	93	12.592	1.511	1.637	7.555	1.889
Málaga	215	30.543	3.665	3.971	18.326	4.581
Sevilla	278	36.335	4.360	4.724	21.801	5.450
<b>ANDALUCIA</b>	<b>1.094</b>	<b>147.138</b>	<b>17.670</b>	<b>19.157</b>	<b>88.249</b>	<b>22.062</b>
Palmas (Las)	154	2.047	109	292	645	1.001
S. C. Tenerife	75	2.144	306	293	447	1.098
<b>CANARIAS</b>	<b>229</b>	<b>4.191</b>	<b>415</b>	<b>585</b>	<b>1.092</b>	<b>2.099</b>
<b>ESPAÑA</b>	<b>12.114</b>	<b>2.426.390</b>	<b>356.370</b>	<b>292.245</b>	<b>1.307.917</b>	<b>469.858</b>

<sup>1</sup> No incluye el porcino ibérico

ENCUESTAS GANADERAS, 2023							
PORCINO IBERICO							
Análisis provincial del censo de animales por tipos, NOVIEMBRE 2023 (número de animales)							
Provincias y Comunidades Autónomas	Total animales	Lechones <sup>1</sup>	Cerdos de 20-49 kg (peso vivo)	Cerdos en cebo			
				Total cerdos de cebo (peso vivo)	De 50-79 kg	De 80-109 kg	> 109 kg
Coruña (La)	0	0	0	0	0	0	0
Lugo	0	0	0	0	0	0	0
Orense	0	0	0	0	0	0	0
Pontevedra	0	0	0	0	0	0	0
<b>GALICIA</b>	<b>0</b>	<b>0</b>	<b>0</b>	<b>0</b>	<b>0</b>	<b>0</b>	<b>0</b>
<b>P. DE ASTURIAS</b>	<b>0</b>	<b>0</b>	<b>0</b>	<b>0</b>	<b>0</b>	<b>0</b>	<b>0</b>
<b>CANTABRIA</b>	<b>0</b>	<b>0</b>	<b>0</b>	<b>0</b>	<b>0</b>	<b>0</b>	<b>0</b>
Alava	0	0	0	0	0	0	0
Guipúzcoa	0	0	0	0	0	0	0
Vizcaya	0	0	0	0	0	0	0
<b>PAIS VASCO</b>	<b>0</b>	<b>0</b>	<b>0</b>	<b>0</b>	<b>0</b>	<b>0</b>	<b>0</b>
<b>NAVARRA</b>	<b>0</b>	<b>0</b>	<b>0</b>	<b>0</b>	<b>0</b>	<b>0</b>	<b>0</b>
<b>LA RIOJA</b>	<b>0</b>	<b>0</b>	<b>0</b>	<b>0</b>	<b>0</b>	<b>0</b>	<b>0</b>
Huesca	0	0	0	0	0	0	0
Teruel	0	0	0	0	0	0	0
Zaragoza	0	0	0	0	0	0	0
<b>ARAGON</b>	<b>0</b>	<b>0</b>	<b>0</b>	<b>0</b>	<b>0</b>	<b>0</b>	<b>0</b>
Barcelona	0	0	0	0	0	0	0
Girona	0	0	0	0	0	0	0
Lleida	0	0	0	0	0	0	0
Tarragona	0	0	0	0	0	0	0
<b>CATALUÑA</b>	<b>0</b>	<b>0</b>	<b>0</b>	<b>0</b>	<b>0</b>	<b>0</b>	<b>0</b>
<b>BALEARES</b>	<b>0</b>	<b>0</b>	<b>0</b>	<b>0</b>	<b>0</b>	<b>0</b>	<b>0</b>
Ávila	93.508	14.013	20.231	58.036	18.260	15.775	24.001
Burgos	38.398	26.202	6.664	4.497	3.008	1.489	0
León	18.150	4.096	62	13.992	5.967	2.412	5.613
Palencia	0	0	0	0	0	0	0
Salamanca	596.754	136.316	94.392	311.151	89.833	89.408	131.910
Segovia	155.716	36.489	40.769	63.902	15.550	14.494	33.858
Soria	10.993	7.562	0	0	0	0	0
Valladolid	96.094	37.323	4.219	40.073	8.170	9.381	22.522
Zamora	162.814	76.445	8.801	67.107	22.086	16.928	28.093
<b>CASTILLA LEON</b>	<b>1.172.427</b>	<b>338.446</b>	<b>175.138</b>	<b>558.758</b>	<b>162.874</b>	<b>149.887</b>	<b>245.997</b>
<b>MADRID</b>	<b>203</b>	<b>85</b>	<b>0</b>	<b>85</b>	<b>0</b>	<b>85</b>	<b>0</b>
Albacete	0	0	0	0	0	0	0
Ciudad Real	16.517	2.021	1.931	12.475	4.268	2.086	6.121
Cuenca	0	0	0	0	0	0	0
Guadalajara	15.720	15.115	0	15	4	0	11
Toledo	137.143	45.701	14.406	63.148	22.876	18.292	21.980
<b>CASTILLA LA MANCHA</b>	<b>169.380</b>	<b>62.837</b>	<b>16.337</b>	<b>75.638</b>	<b>27.148</b>	<b>20.378</b>	<b>28.112</b>
Alicante	0	0	0	0	0	0	0
Castellón	0	0	0	0	0	0	0
Valencia	0	0	0	0	0	0	0
<b>C. VALENCIANA</b>	<b>0</b>	<b>0</b>	<b>0</b>	<b>0</b>	<b>0</b>	<b>0</b>	<b>0</b>
<b>R. DE MURCIA</b>	<b>183.279</b>	<b>9.980</b>	<b>33.165</b>	<b>135.843</b>	<b>55.262</b>	<b>40.850</b>	<b>39.731</b>
Badajoz	1.181.442	323.972	187.905	531.291	62.325	108.418	360.548
Cáceres	172.191	37.132	26.991	95.788	9.245	13.101	73.442
<b>EXTREMADURA</b>	<b>1.353.633</b>	<b>361.104</b>	<b>214.896</b>	<b>627.079</b>	<b>71.570</b>	<b>121.519</b>	<b>433.990</b>
Almería	18.544	3.631	7.749	2.935	1.145	192	1598
Cádiz	43.394	8.196	11.699	16.923	4.886	3.818	8219
Córdoba	232.324	28.621	40.186	141.396	15.709	15.542	110145
Granada	27.883	6.054	9.520	8.902	3.436	1.632	3834
Huelva	171.685	31.227	38.217	82.264	13.974	10.088	58202
Jaén	24.974	5.190	7.305	6.314	1.692	1.674	2948
Málaga	25.085	5.249	5.388	9.834	1.161	3.141	5532
Sevilla	190.312	18.325	41.633	115.731	12.071	11.278	92382
<b>ANDALUCIA</b>	<b>734.201</b>	<b>106.493</b>	<b>161.697</b>	<b>384.299</b>	<b>54.074</b>	<b>47.365</b>	<b>282860</b>
Palmas (Las)	0	0	0	0	0	0	0
S. C. Tenerife	0	0	0	0	0	0	0
<b>CANARIAS</b>	<b>0</b>	<b>0</b>	<b>0</b>	<b>0</b>	<b>0</b>	<b>0</b>	<b>0</b>
<b>ESPAÑA</b>	<b>3.613.123</b>	<b>878.945</b>	<b>601.233</b>	<b>1.781.702</b>	<b>370.928</b>	<b>380.084</b>	<b>1.030.690</b>

<sup>1</sup> Cerdos con un peso vivo inferior a 20 Kg.

ENCUESTAS GANADERAS, 2023						
PORCINO IBERICO						
Análisis provincial del censo de animales por tipos, NOVIEMBRE 2023 (número de animales)						
Provincias y Comunidades Autónomas	Verracos	Total Cerdas Reproductoras	Cerdas Reproductoras			
			Nunca han parido		Han parido	
			Cerdas todavía no cubiertas	Cerdas cubiertas por 1ª vez	Cerdas cubiertas más veces	Cerdas criando o en reposo
Coruña (La)	0	0	0	0	0	0
Lugo	0	0	0	0	0	0
Orense	0	0	0	0	0	0
Pontevedra	0	0	0	0	0	0
<b>GALICIA</b>	<b>0</b>	<b>0</b>	<b>0</b>	<b>0</b>	<b>0</b>	<b>0</b>
<b>P. DE ASTURIAS</b>	<b>0</b>	<b>0</b>	<b>0</b>	<b>0</b>	<b>0</b>	<b>0</b>
<b>CANTABRIA</b>	<b>0</b>	<b>0</b>	<b>0</b>	<b>0</b>	<b>0</b>	<b>0</b>
Alava	0	0	0	0	0	0
Guipúzcoa	0	0	0	0	0	0
Vizcaya	0	0	0	0	0	0
<b>PAIS VASCO</b>	<b>0</b>	<b>0</b>	<b>0</b>	<b>0</b>	<b>0</b>	<b>0</b>
<b>NAVARRA</b>	<b>0</b>	<b>0</b>	<b>0</b>	<b>0</b>	<b>0</b>	<b>0</b>
<b>LA RIOJA</b>	<b>0</b>	<b>0</b>	<b>0</b>	<b>0</b>	<b>0</b>	<b>0</b>
Huesca	0	0	0	0	0	0
Teruel	0	0	0	0	0	0
Zaragoza	0	0	0	0	0	0
<b>ARAGON</b>	<b>0</b>	<b>0</b>	<b>0</b>	<b>0</b>	<b>0</b>	<b>0</b>
Barcelona	0	0	0	0	0	0
Girona	0	0	0	0	0	0
Lleida	0	0	0	0	0	0
Tarragona	0	0	0	0	0	0
<b>CATALUÑA</b>	<b>0</b>	<b>0</b>	<b>0</b>	<b>0</b>	<b>0</b>	<b>0</b>
<b>BALEARES</b>	<b>0</b>	<b>0</b>	<b>0</b>	<b>0</b>	<b>0</b>	<b>0</b>
Ávila	19	1.209	117	72	765	255
Burgos	2	1.033	124	81	380	448
León	0	0	0	0	0	0
Palencia	0	0	0	0	0	0
Salamanca	1.584	53.311	3.926	4.444	27.966	16.975
Segovia	71	14.485	3.065	1.031	7.133	3.256
Soria	15	3.416	160	191	2.284	781
Valladolid	57	14.422	2.004	1.256	7.673	3.489
Zamora	81	10.380	4.972	1.896	2.006	1.506
<b>CASTILLA LEON</b>	<b>1.829</b>	<b>98.256</b>	<b>14.368</b>	<b>8.971</b>	<b>48.207</b>	<b>26.710</b>
<b>MADRID</b>	<b>3</b>	<b>30</b>	<b>5</b>	<b>0</b>	<b>0</b>	<b>25</b>
Albacete	0	0	0	0	0	0
Ciudad Real	13	77	8	0	65	4
Cuenca	0	0	0	0	0	0
Guadalajara	4	586	65	69	372	80
Toledo	156	13.732	1.066	1.551	8.231	2.884
<b>CASTILLA LA MANCHA</b>	<b>173</b>	<b>14.395</b>	<b>1.139</b>	<b>1.620</b>	<b>8.668</b>	<b>2.968</b>
Alicante	0	0	0	0	0	0
Castellón	0	0	0	0	0	0
Valencia	0	0	0	0	0	0
<b>C. VALENCIANA</b>	<b>0</b>	<b>0</b>	<b>0</b>	<b>0</b>	<b>0</b>	<b>0</b>
<b>R. DE MURCIA</b>	<b>0</b>	<b>4.291</b>	<b>1.751</b>	<b>549</b>	<b>1.646</b>	<b>345</b>
Badajoz	4.653	133.621	9.059	2.078	55.701	66.783
Cáceres	968	11.312	297	178	5.476	5.361
<b>EXTREMADURA</b>	<b>5.621</b>	<b>144.933</b>	<b>9.356</b>	<b>2.256</b>	<b>61.177</b>	<b>72.144</b>
Almería	30	4.199	504	546	2.519	630
Cádiz	378	6.198	620	672	3.374	1.532
Córdoba	1.329	20.792	2.047	2.289	10.415	6.041
Granada	27	3.380	404	437	2.024	515
Huelva	1.353	18.624	1.816	1.968	8.966	5.874
Jaén	43	6.122	753	814	3.620	935
Málaga	115	4.499	488	523	2.505	983
Sevilla	642	13.981	1.451	1.570	7.114	3.846
<b>ANDALUCIA</b>	<b>3.917</b>	<b>77.795</b>	<b>8.083</b>	<b>8.819</b>	<b>40.537</b>	<b>20.356</b>
Palmas (Las)	0	0	0	0	0	0
S. C. Tenerife	0	0	0	0	0	0
<b>CANARIAS</b>	<b>0</b>	<b>0</b>	<b>0</b>	<b>0</b>	<b>0</b>	<b>0</b>
<b>ESPAÑA</b>	<b>11.543</b>	<b>339.700</b>	<b>34.702</b>	<b>22.215</b>	<b>160.235</b>	<b>122.548</b>

S.G. Análisis, Coordinación y Estadística:

<https://www.mapa.gob.es/es/estadistica/temas/estadisticas-agrarias/ganaderia/encuestas-ganaderas/>

Correo electrónico: [sgapc@mapa.es](mailto:sgapc@mapa.es). Se autoriza su utilización total o parcial siempre que se cite expresamente su origen. Referenciar el documento como:

**“Estadística de Ganado Porcino. Resultados”** Edita: © **Ministerio de Agricultura, Pesca y Alimentación**. NIPO: 003230290

Catálogo de Publicaciones de la Administración General del Estado: <https://cpage.mpr.gob.es/>